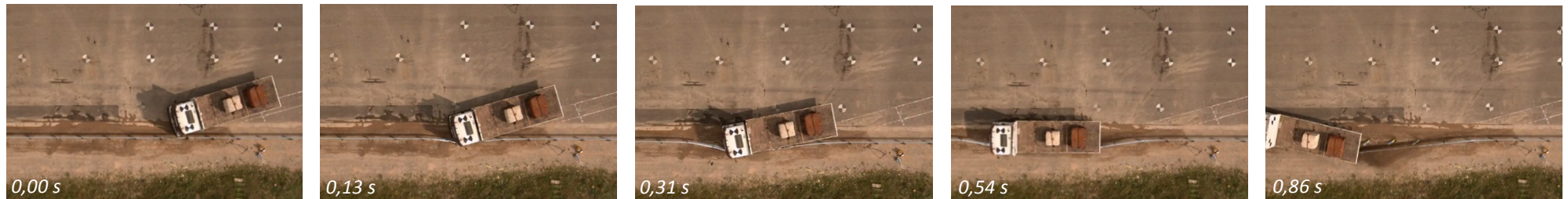




- Test Agency ..... CSI Certificazione e Testing
- Test Number ..... 0066\ME\HRB\15
- Reference Standard
  - UNI EN 1317-1:2010
  - UNI EN 1317-2:2010
- **ITT** ..... **TB11**
- Date ..... 01/09/2015
- **Test Article** ..... **Dispositivo de Contensão Nível H1**
- Total Length ..... 80,0 m
- Key Elements - Barrier
  - Description:
  - Length: 4,0 m
  - Width: 211,0 mm
  - Height: 724,5 mm
- Test Vehicle
  - Type/Designation ..... 900C
  - Make and Model..... 1992 Fiat Uno
- Impact Conditions
  - Speed ..... 101,4 km/h
  - Angle ..... 20 °
  - Location/Orientation ..... Poste 13
- Post-impact Trajectory
  - Vehicle Stability ..... Satisfactory
  - Vehicle remains within the exit box ..... Yes

- Vehicle Snagging ..... No
- Vehicle Pocketing ..... No
- Vehicle rolls over ..... No
- During and after the impact no more than one wheel of the vehicle steps over the rearmost part of the deformed system ..... Yes
- VCDI ..... LF 0011010
- Impact test acceptance criteria
  - ASI ..... 0,73
  - Flight time ..... 129,00 ms
  - THIV ..... 25,50 km/h
  - **Severity level** ..... **A**
- Test Article Deflections
  - Permanent Set ..... 0,41 m
  - Dynamic ..... 0,60 m
  - Working Width ..... 0,60 m
  - **Functional level** ..... **W1**
- Test Acceptance Criteria
  - **The barrier contains the vehicle** ..... **Yes**
  - Complete breakage of any principal longitudinal elements ..... No
  - Parts over the mass of 2kg detached ..... No
  - Penetration of elements into the passenger compartment ..... No
  - Deformation of elements into the passenger compartment ..... No



- Test Agency ..... CSI Certificazione e Testing
- Test Number ..... 0065\ME\HRB\15
- Reference Standard
  - UNI EN 1317-1:2010
  - UNI EN 1317-2:2010
- **ITT** ..... **TB42**
- Date ..... 01/09/2015
- **Test Article** ..... **Dispositivo de Contensão Nível H1**
- Total Length ..... 80,0 m
- Key Elements - Barrier
  - Description: H1 Class Monolateral barrier for installation on soil
  - Length: 4,0 m
  - Width: 211,0 mm
  - Height: 724,5 mm
- Test Vehicle
  - Type/Designation ..... 10000S
  - Make and Model ..... 1995 MAN 12-232
- Impact Conditions
  - Speed ..... 70,70 km/h
  - Angle ..... 15,5 °
  - Location/Orientation ..... Poste 14
- Post-impact Trajectory
  - Vehicle Stability ..... Satisfactory
  - Vehicle remains within the exit box ..... Yes

- Vehicle Snagging ..... No
- Vehicle Pocketing ..... No
- Vehicle rolls over ..... No
- During and after the impact no more than one wheel of the vehicle steps over the rearmost part of the deformed system ..... Yes
- Test Article Deflections
  - Permanent Set ..... 0,78 m
  - Dynamic ..... 1,00 m
  - Working Width ..... 1,10 m
  - **Functional level** ..... **W4**
  - Vehicle Intrusion ..... 2,10 m
  - **Class of Vehicle Intrusion** ..... **VI6**
  - Length of contact ..... 21,00 m
- Test Acceptance Criteria
  - **The barrier contains the vehicle** ..... **Yes**
  - Complete breakage of any principal longitudinal elements ..... No
  - Parts over the mass of 2kg detached ..... No
  - Penetration of elements into the passenger compartment ..... No
  - Deformation of elements into the passenger compartment ..... No